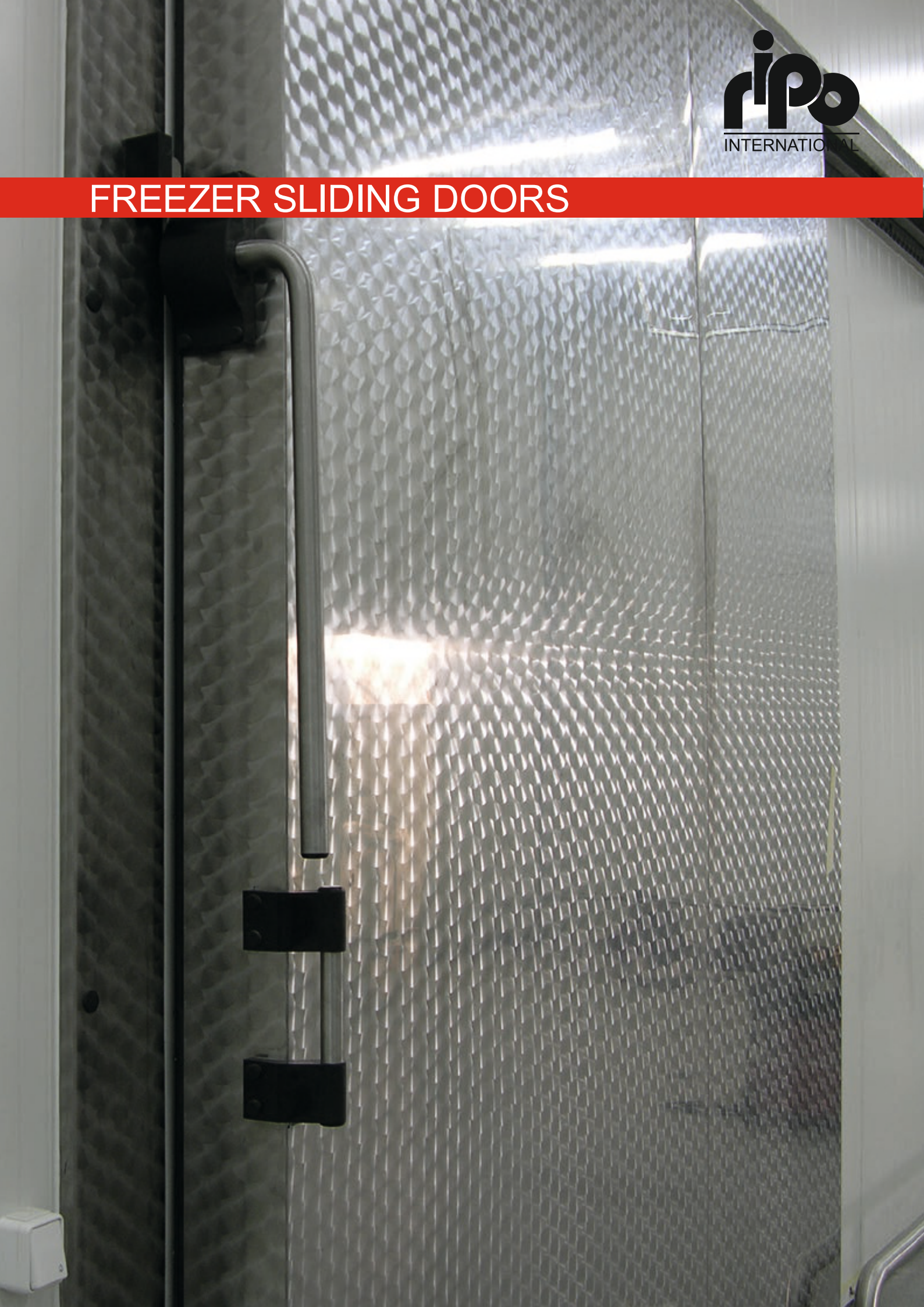


# FREEZER SLIDING DOORS



# FREEZER SLIDING DOORS

## ▶ CHARACTERISTICS

Sliding doors for freezer room are designed for a temperature between -45 and -50°C. We have to offer a lot of heated frames and door leafs variants, dedicated to different walls, shapes of door niches, space available and customers preferences. Each freezer door has heated frame and threshold that protects the gasket from freezing. What is more, we added a special thermostat that regulates the temperature also in cases when the freezer does not work. Each door is individually designed in order to ensure durability and a nice job for many years. Each door has its own unique serial number.

## ▶ DOOR LEAF

Can be made of: stainless steel, zinc coated galvanized steel 0.8 mm or 0.75 mm. The thickness of the door panel is:

100 mm – -25°C

120 mm – -35°C

150 mm – -45°C

The door leafs can be made as inside frame or saving space half frame construction. Door panels (stainless steel) are welded in the corners, all construction is a top hygienic standard design and produced with great care. All construction elements inside the door leaf are also made from stainless steel what means, that our product is produced from best quality materials.

## ▶ FRAMES

We offer several types of frames used depending on the assembly possibilities. Each frame is equipped with a special acid-strengthening to ensure rigidity and durability.

Freezer frame are heated (heater power depending on conditions) and equipped with thermostat that protects from overheating when the freezer does not work in any moment. Optionally, it is possible to use a cheaper overlay one side frame. Each frame is filled with polyurethane foam. The frame is integrated with an acid-resistant, heated threshold (installed equally to the floor level). Optionally, instead of heated threshold we can heat the bottom of the door leaf.

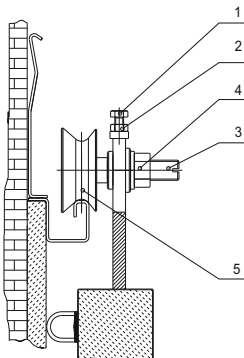
## ▶ SLIDING SYSTEM 2 OPTIONS TO CHOOSE

**Classical sliding rail** Standard system, refining over the years design, made entirely of stainless steel. Classical sliding rail has the cover made of two large especially shaped PE black rolls. the same material as the door leaf. Polyethylene rollers are specially designed to provide quiet operation and durability of the door. During closing the door goes down and tighten the frame.

**Pipe sliding rail** is constructed of aesthetically brushed stainless steel pipe and steel. Special shaping of the tube causes that the rollers fall down and tightened the frame during closing.

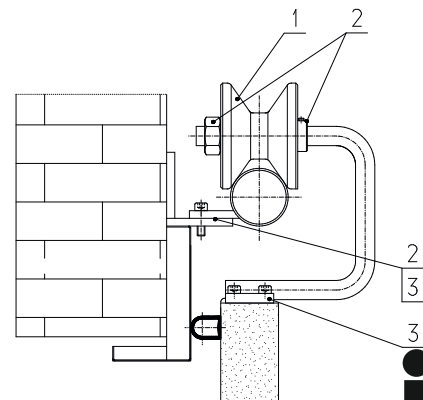
### UPPER ROLLER

1. Vertical regulation bolt
2. Lock nut
3. Roller bolt (horizontal regulation)
4. Lock nut
5. Roller



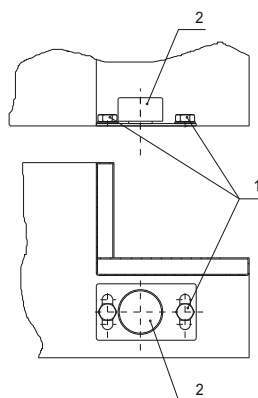
### UPPER ROLLER

1. Roller
2. Horizontal regulation
3. Vertical regulation



### DOWN ROLLER

1. Installation bolt
2. Down roller of sliding system



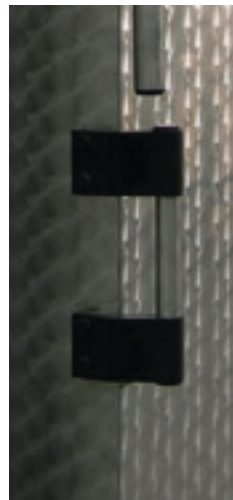
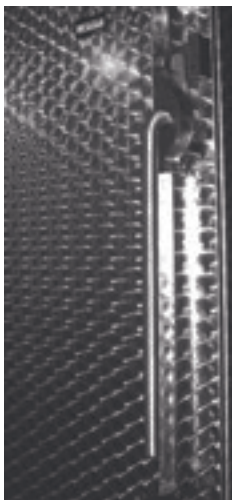
# FREEZER SLIDING DOORS



▶ **STANDARD EQUIPMENT**

Integrated external-internal pusher

Internal / external handle



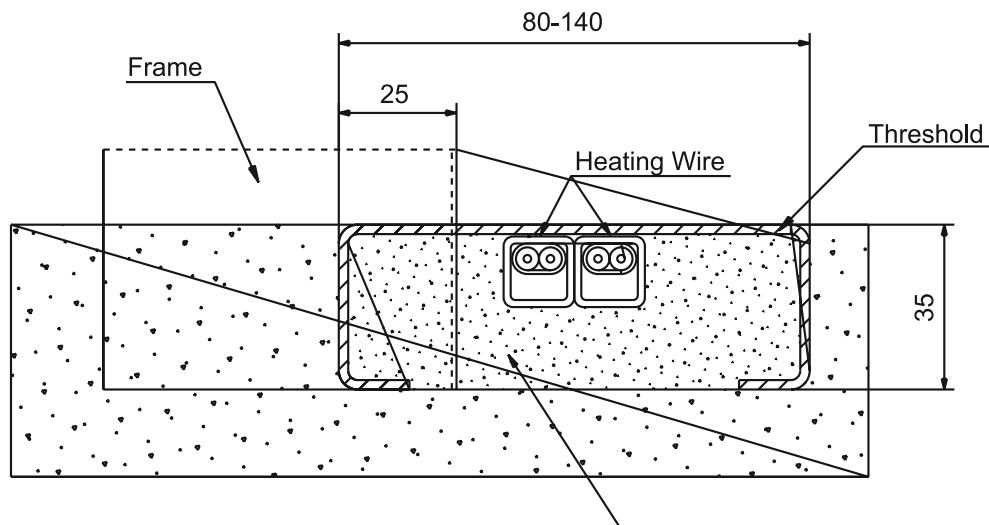
# FREEZER SLIDING DOORS

## ▶ SEALING

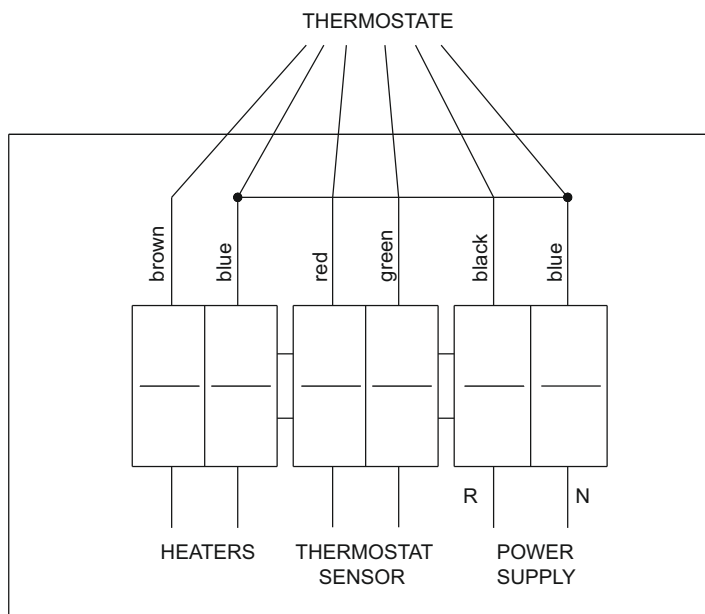
Each freezer door is equipped with double special twocomponent gasket installed in special plastic profile. This solution eliminates the thermal bridge of the door leaf and guarantees tightness.

## ▶ HEATED THRESHOLD

Made from 2mm thick stainless steel with special reinforcements inside, concrete and removable heaters. This is a strong construction prepared for heavy load trucks.



## ▶ HEATER CONNECTION



# FREEZER SLIDING DOORS

## ▶ CATALOGUE NUMBERS OF SLIDING FREEZER DOORS

	MP100	MP 120	MP150
APPLICATION	FREEZERS -25°C -0°C	FREEZERS -30°C -25°C	SHOCK FREEZERS -45°C -30 °C
LEAF THICKNESS	100	120	150
<b>MATERIAL</b>			
STAINLESS STEEL			
GALVANIZED PAINTED/POWDER PAINTED/MIX			
<b>SURFACE VARIANTS</b>			
STAINLESS STEEL	V2A (1.4301), V4A (1.4401) SMOOTH, CIRCLE BRUSHED, LINE BRUSHED, BRUSHED		
ZINC COATED - PAINTED	PAINTED ACCORDING TO RAL PALETTE COLOURS		
ZINC COATED - LAMINATED	SPECIAL FOIL LAMINATED STEEL - CAN BE IN DIFFERENT COLOURS AND STRUCTURES		
ZINC COATED - GALVANIZED	AS A STANDARD – RAL 9002, RAL 9010. OTHER COLOURS UNDER REQUEST		
<b>DOOR FRAMES (MORE INFORMATION ON PAGE 85)</b>			
AF - ANGLE FRAMES	S	S	S
OS - ONE SIDE FRAMES	O	O	O
BL - BLOCK FRAME LEFT	O	O	O
BR - BLOCK FRAME RIGHT	O	O	O
3-S - BLOCK FRAME 3 SIDES	O	O	O
<b>INSTALLATION VARIANTS (MORE INFORMATION ON PAGE 89)</b>			
FULL BRICK WALL			
SANDWICH PANEL			
HOLLOW BRICK			
<b>LOCKS</b>			
LOCK FOR SLIDING DOORS	O	O	O
SAFE LOCK	O	O	O
DOUBLE LOCK	O	O	O
REVERSE SIDE LOCK	O	O	O
<b>ADDITIONAL EQUIPMENT</b>			
NO THRESHOLD DOOR WITH HEATED THE BOT TOM OF THE DOOR LEAF			
DOOR NICHES COVERS			
PE DOOR LEAFS BUMPERS			
BOTTOM STAINLESS STEEL DOOR LEAFS COVER			
INTERNAL FRONT REINFORCEMENT			
WIDE DOOR FRAME FOR DOOR NICHE WITH STYROFOAM			

Mix – stainless steel frame, door leaf painted. Stainless steel door leaf from internal side, painted or galvanized from external side.

Angle frames can be made only from stainless steel. In case of galvanized steel doors we can use one side galvanized frames. Stainless steel frames can be used as optional equipment than.